



TEXHA®

CAGE-FREE SYSTEM FOR BROILERS

CAGE-FREE EQUIPMENT

TEXHA.COM



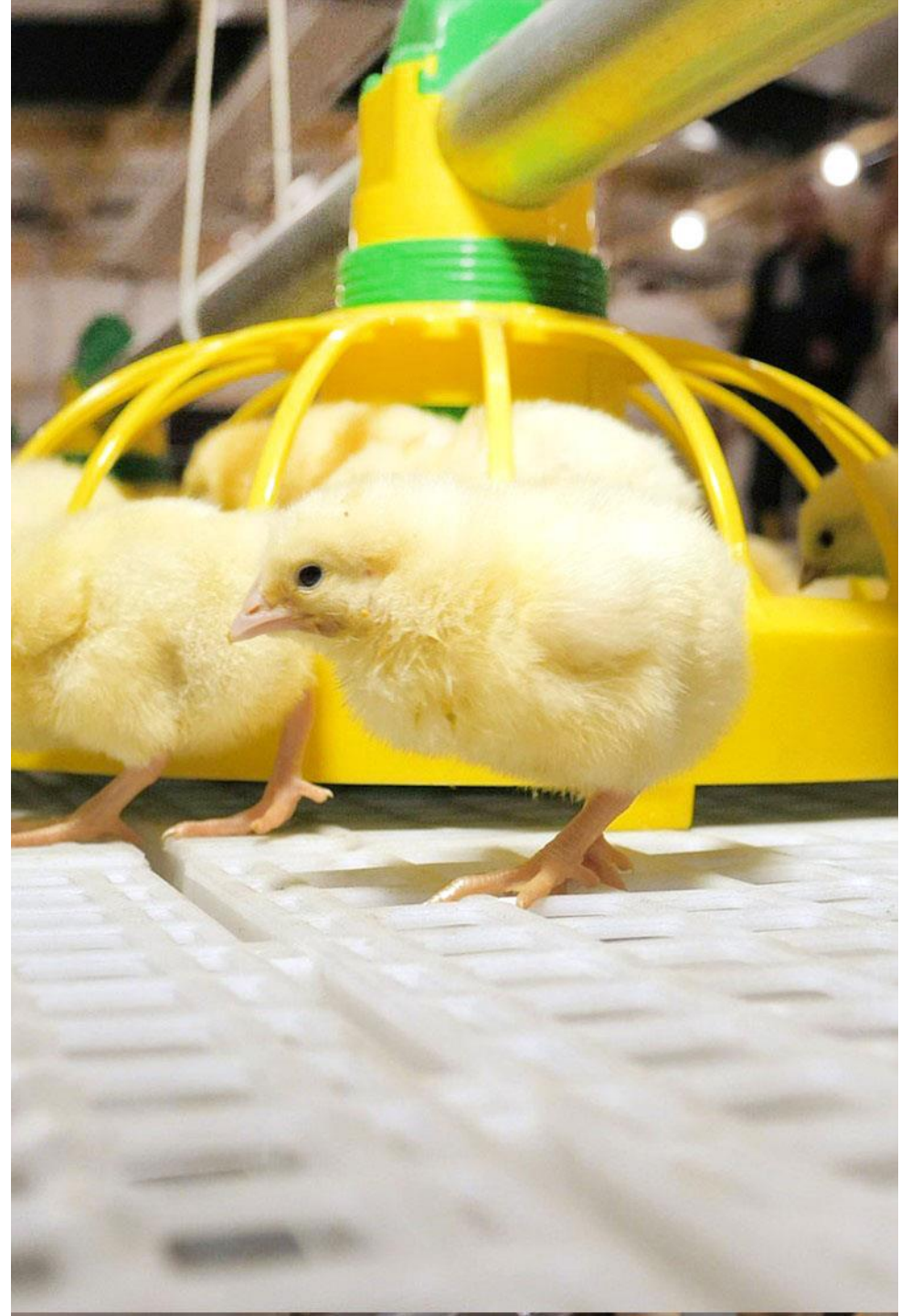
MaxGrow

THE MOST HUMAN WAY TO TREAT YOUR BIRDS

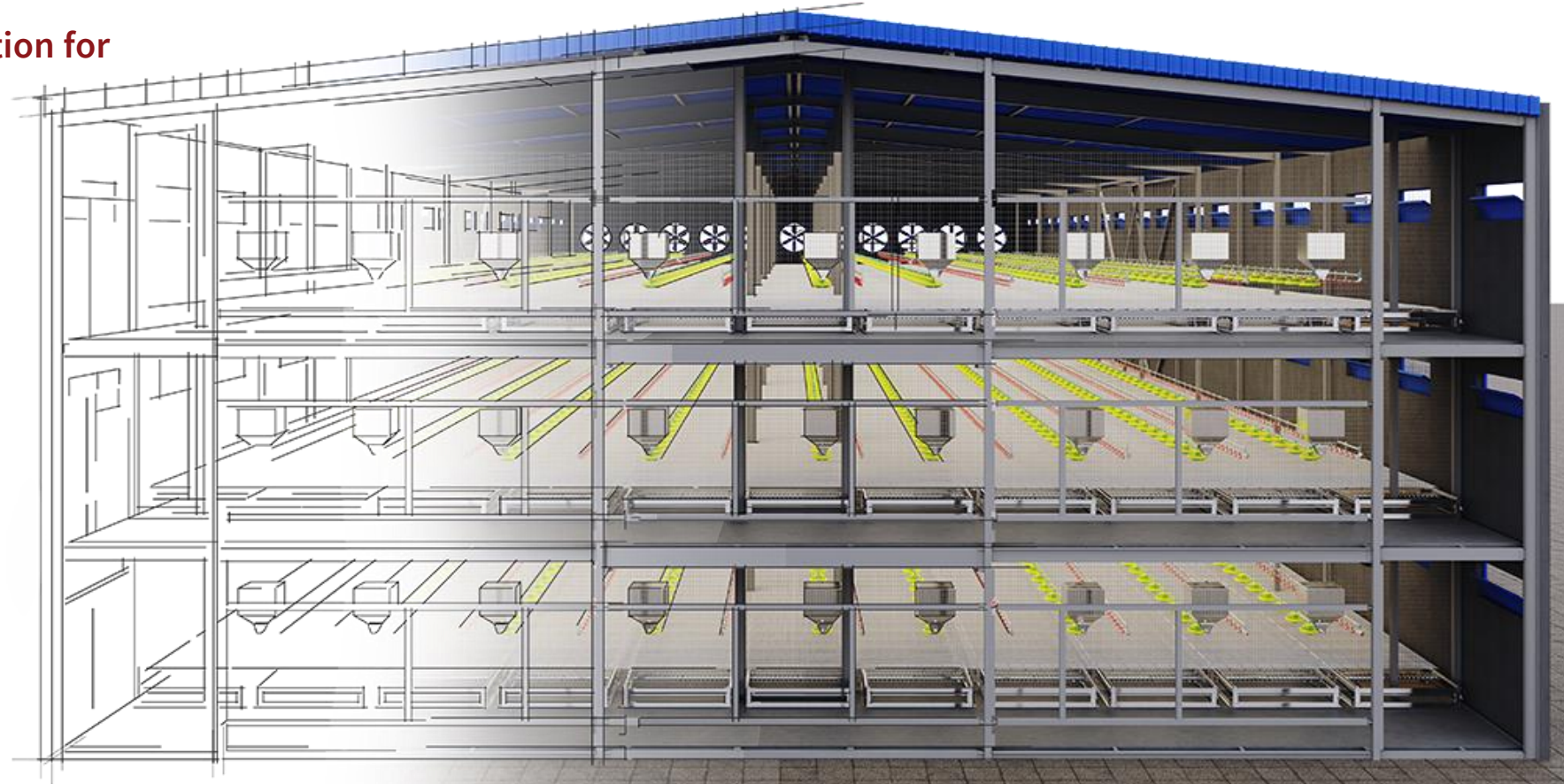
The most important advantage
Comfort for birds, convenience for people



5
FREEDOMS



Innovative technology!
System transformation for
any kind of bird

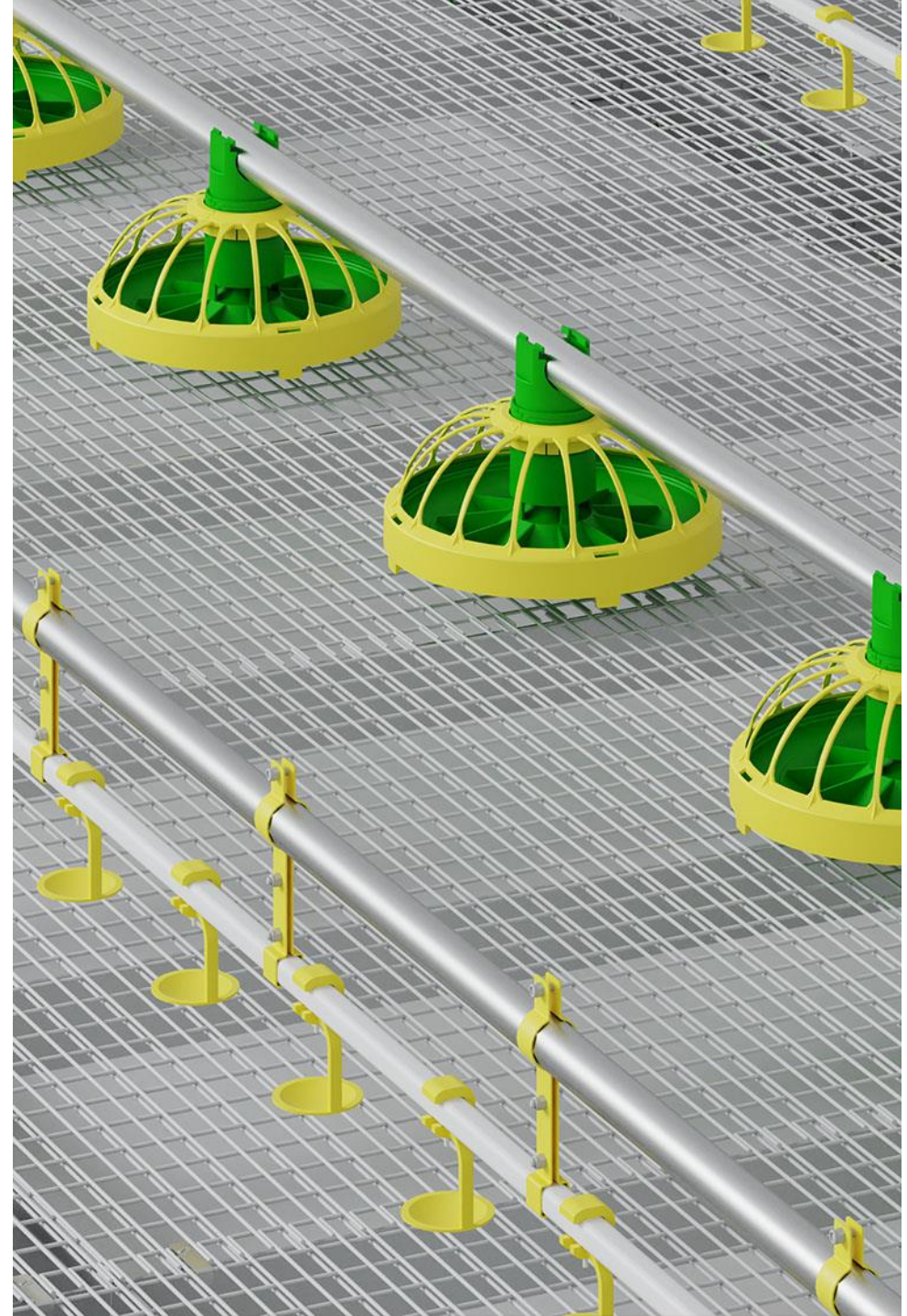


SEVERAL FLOORS OF REAL CAGE-FREE
3 AND 4 LEVELS OF FLOOR EQUIPMENT ARE PACKED TO ONE HOUSING



SEVERAL FLOORS OF REAL CAGE-FREE

Compliance with the requirements and
recommendations of international certification
organizations for cage-free



PROTECT YOUR BUSINESS



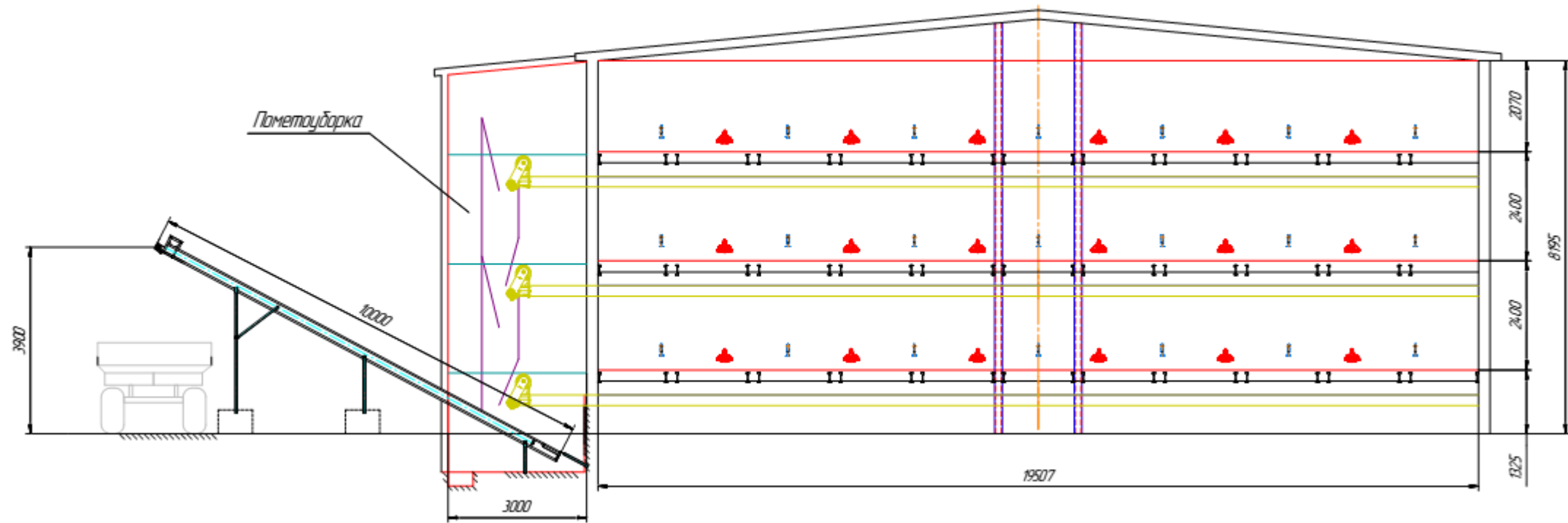
- Versatile design flexible enough to adopt to different standards
- Design compliant with cage-free farming requirements
- Automation of all production processes
- Safe investments, easy management
- Cost-effectiveness: saving money, space, time & labor

3 floors:

total- 157 950

birds places- 18 heads/sq.m (1,67 heads/sq.ft)

house length- 150 m (492 ft)

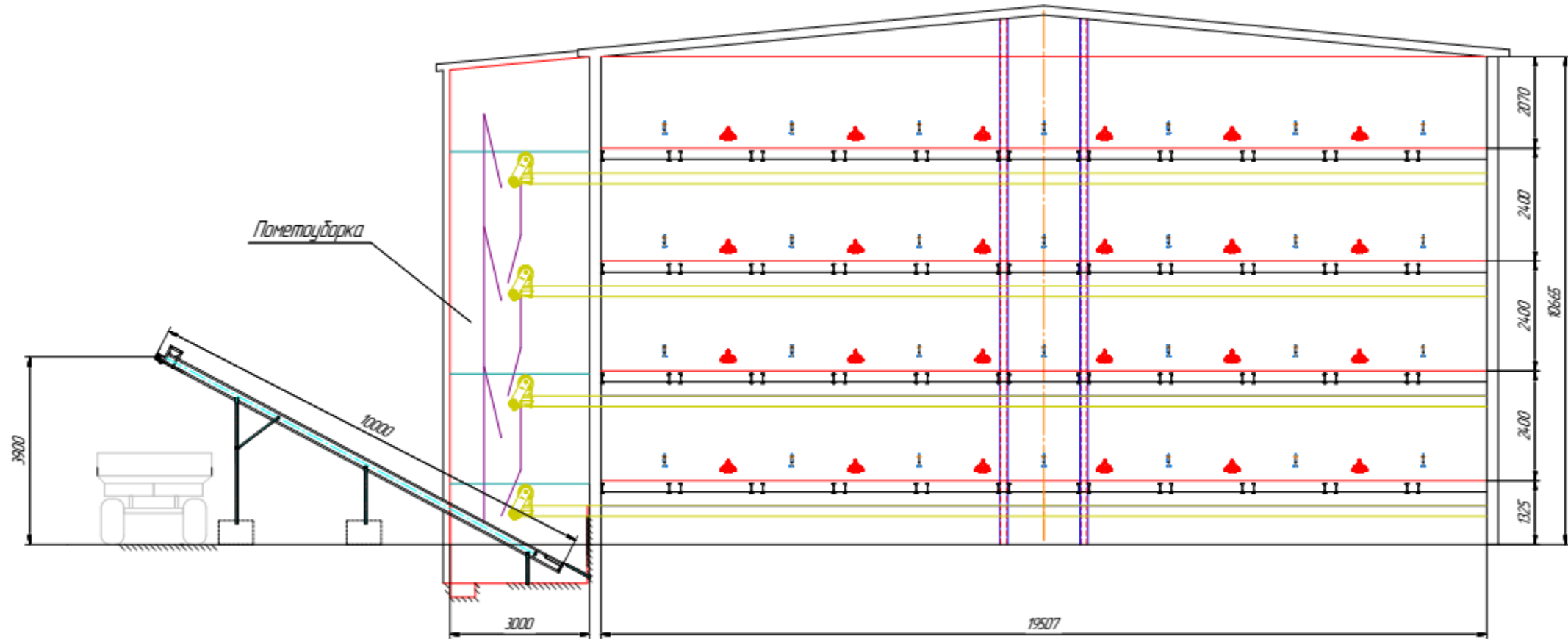


4 floors:

total- 210 600

birds places- 18 heads/sq.m (1,67 heads/sq.ft)

house length- 150 m (492 ft)



LITTER REMOVAL SYSTEM

FULL AUTOMATION OF THE LITTER REMOVAL SYSTEM

Quick and reliable litter removal across all levels of the facility

The litter removal system design and operation principle are identical for each level

Efficient litter removal technology, minimizing the bird's exposure to litter, helps to prevent many issues related to the poultry health



- Full automation of the litter removal system
- Belt-based litter removal system
- High-quality litter removal
- Maintenance of the equipment in clean condition

The litter removal system consists of:

- Drive and tension station
- Polypropylene belt
- Transverse and inclined conveyor

LITTER REMOVAL SYSTEM



- Includes hard surface for scooping and dust bathing
- Polypropylene litter removal belt
- No scrappers or concrete trenches
- Regular and complete litter cleaning
- Flexible litter removal arrangement
- Improved poultry house hygiene
- Floor made of plastic or galvanized steel mesh helps to reduce poultry exposure to litter
- Litter removal belt running under the floor
- Daily litter discharge on the transverse conveyor
- Single inclined conveyor used to load semi-dry litter into the disposal vehicle
- Ability to remove litter several times during the day

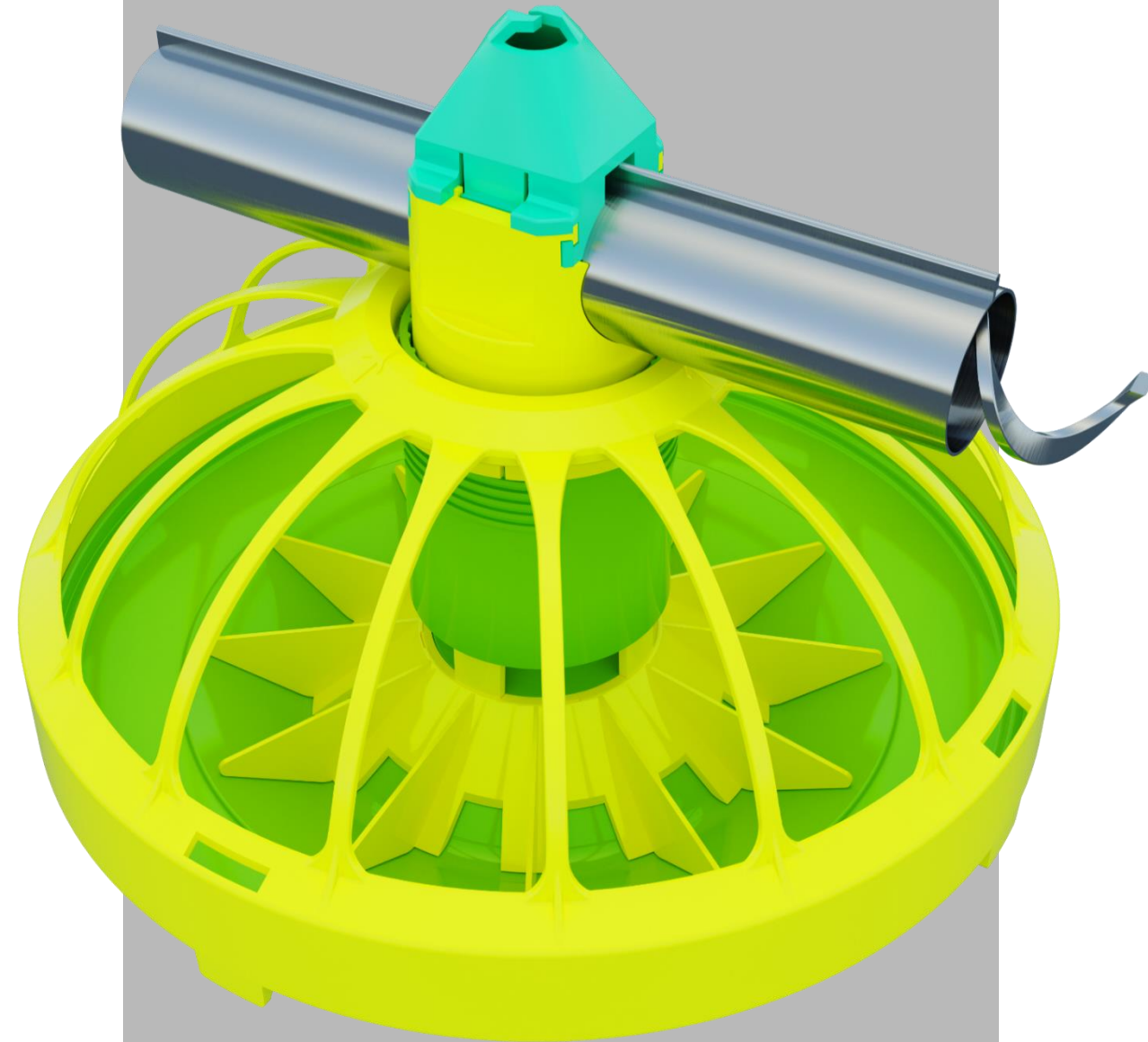
FEEDING SYSTEM

- Feed storage bin
- Rolled feeding line pipes made of galvanized steel
- Auger made of high-quality spring steel
- Plate-type feeders
- Automated feed supply system



FEEDER KoChiBo

- Low feeder edge allows the chicks to access the feed from the very first day of life
- 5-level adjustment of feed supply, feed volume and quantity
- Folded flanges and beams of the feeder limit the chicks' ability to enter inside the feedbox, thus preventing scattering and loss of the feed
- Wide diameter of distribution mechanism ensures unhindered spilling and homogenous distribution of feeds
- Movable W-shaped plate ensures 360° even feed distribution in the feedbox



DRINKING SYSTEM

- The water treatment unit comprises of filters, water flow meter, medicator, pressure gauges, valves and fittings, as well as veterinary medication dispenser.
- Each drinking line is equipped with the pressure regulator, vertically operated nipple drinkers and drop catcher.
- Drinking line height may be adjusted either manually or using gear-motor drive.
- Drinking line and perch assembly ensures extra structural rigidity.
- Factory-assembled square-section polypropylene pipes with nipple drinkers ensure high quality and reliable sealing of drinking lines;
- Optimal pipe length helps to reduce the number of connection points.



LIGHTING SYSTEM

Advantages

- Use of LED lamps with energy consumption
 - 10 times lower as compared to the filament lamps
 - 2,5 times lower as compared to the luminescent lamps
- Lighting intensity adjustment in 0-100% range for sunrise / sunset functions
- Compliance with the international environmental requirements;
- High level of protection against external impacts
- Warranty and post-warranty service



MICROCLIMATE

The microclimate system may consist of the one to four following sub-systems in various combinations:

- Ventilation
- Heating
- Humidification / cooling
- Automation

Ventilation system by TEXHA:

- High performance
- Energy efficiency
- Low noise level
- Durability of equipment
- Reliability and cost effectiveness

