



TEXHA®

BROILER CHICKEN FLOOR MANAGEMENT EQUIPMENT

FLOOR EQUIPMENT

TEXHA.COM

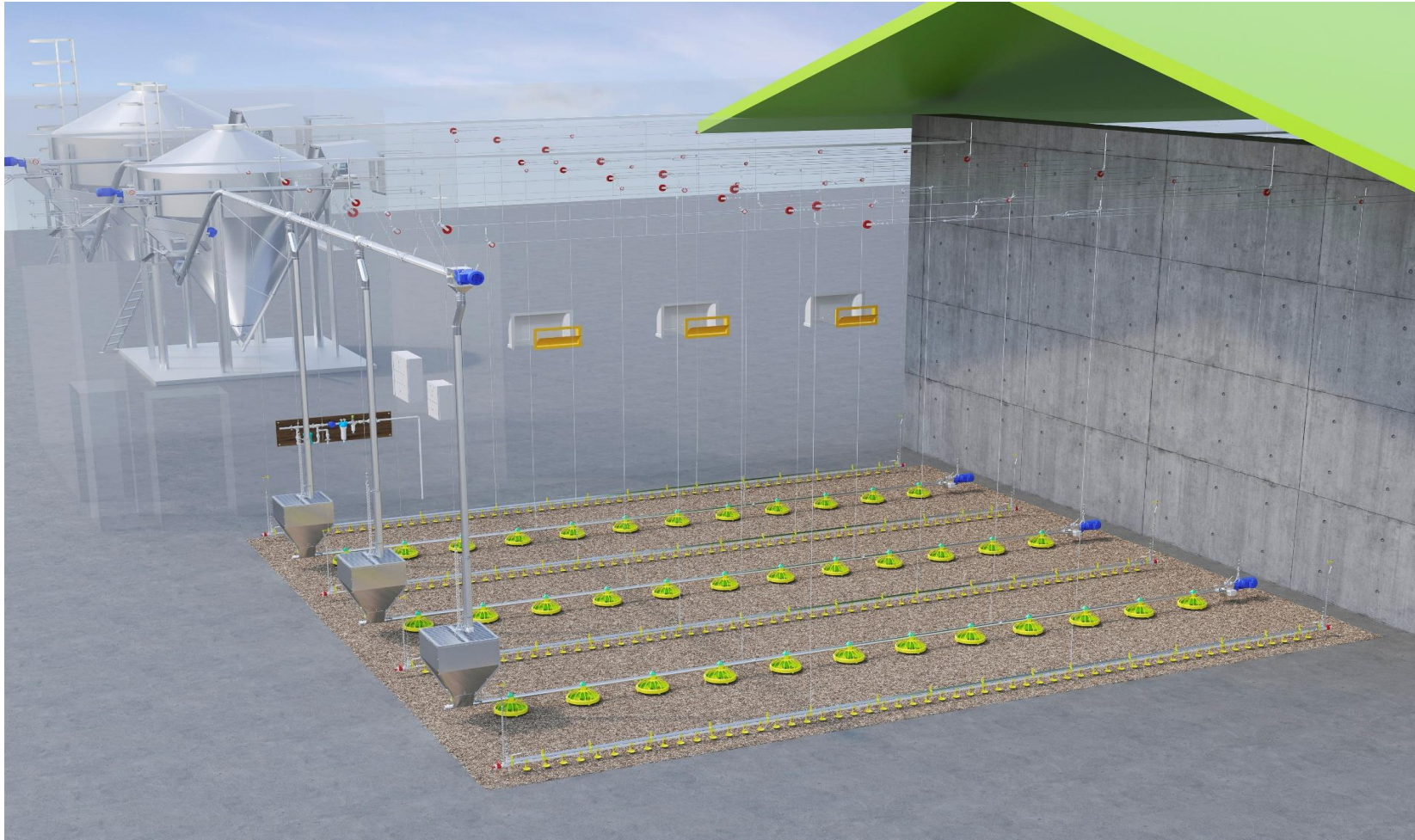


TEXHA COMPANY

- In-house manufacturing
- Quality control and assurance
- Own R&D site
- Service center network
- Business success warranty

- Supervised installation of equipment
- Equipment commissioning
- Warranty and post-warranty service
- Veterinary and technological support
- Service maintenance
- Equipment troubleshooting
- Poultry farm personnel training





TEXHA has designed the comprehensive solution and offers ready-to-use sets of processing equipment with automated control of the poultry life support processes, including feeding, drinking, lighting and microclimate.

EQUIPMENT SPECIFICATIONS

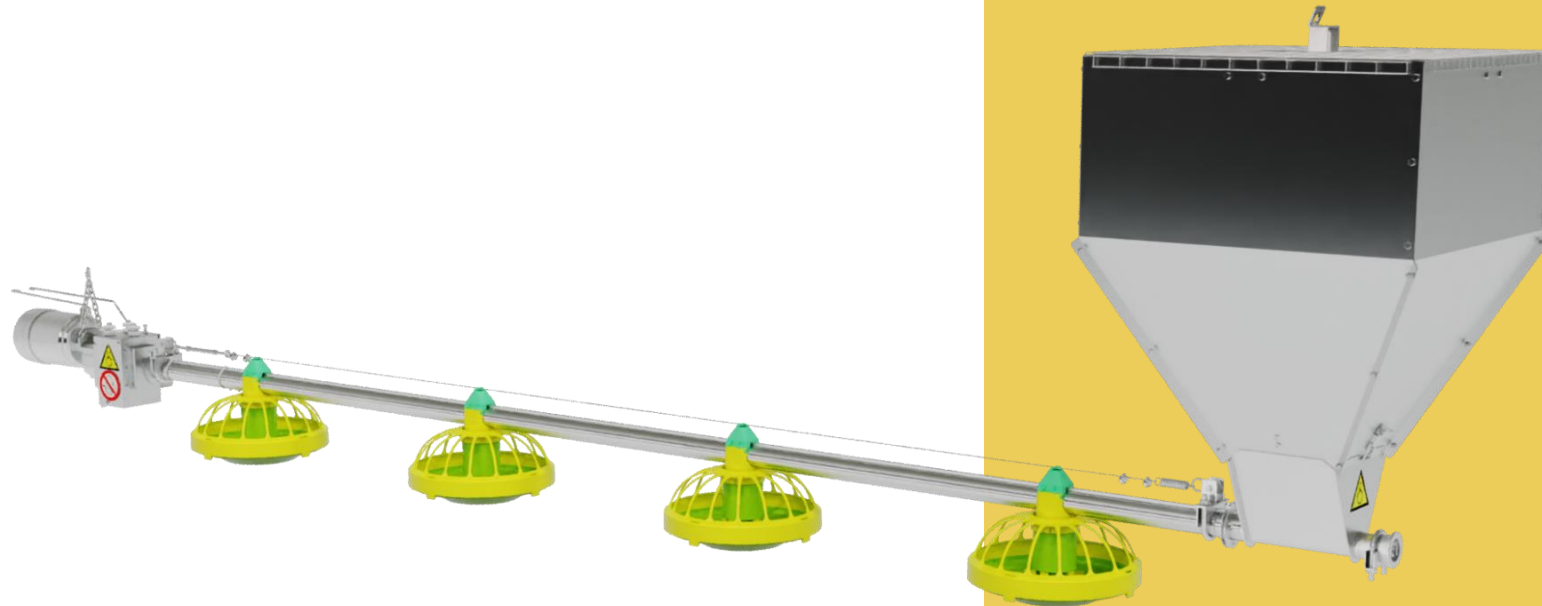
Equipment Specifications	Light Broiler Chicken < 1,8 kg	Medium Broiler Chicken 1,8-3 kg	Heavy Broiler Chicken > 3 kg
Number of birds / feedbox	80-70	65-50	45-30
Average final age, weeks	6	7	8
Average final weight, kg*	1,85	2,5	3,5
Housing density, birds./sq.m.	23	18	12
Feedbox diameter, mm	330		
Average feedbox capacity, g	730 (feed level - 4)		
Pipe Ø mm	45		
Motor	0,37 kW - 350 Hz, 3-phase, 500 kg/year		
Feeding line length, m	120		

**Depends on compliance with recommended rearing process parameters.*

FEEDING SYSTEM

The feeding system uses the auger feed distribution mechanism.

- Feed storage bin
- Rolled feeding line pipes made of galvanized steel
- Auger made of high-quality spring steel
- Plate-type feeders



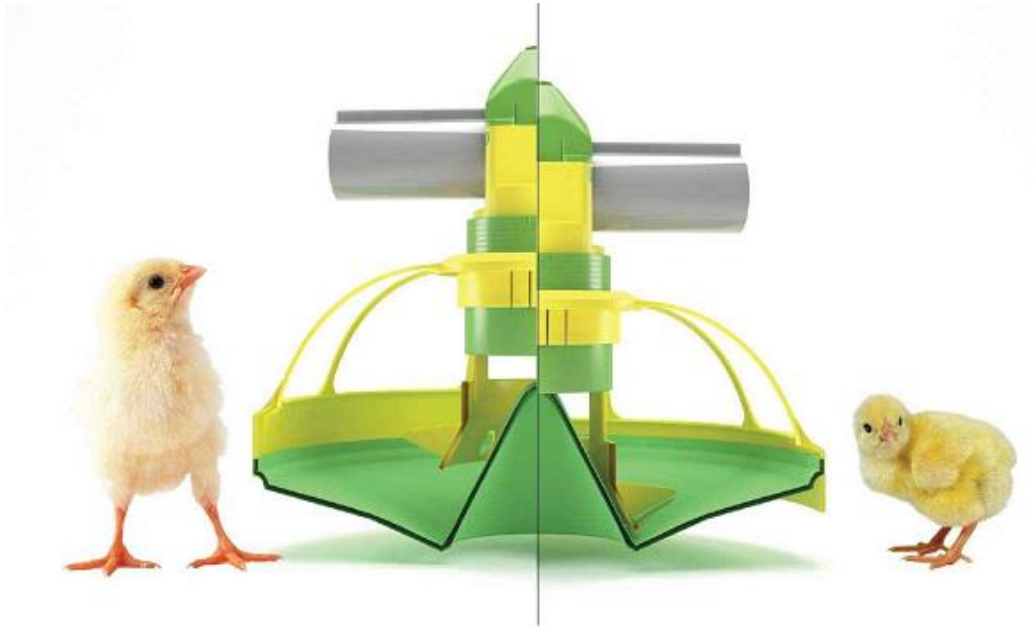
KoChiBo FEEDER

Key outstanding feature of KoChiBo feeder is preservation of feed and reduction of irrecoverable feed loss!



- Low feeder edge allows the chicks to access the feed from the very first day of life
- 5-level adjustment of feed supply, feed volume and quantity
- Wide diameter of distribution mechanism ensures unhindered spilling and homogenous distribution of feeds
- Movable W-shaped plate is mounted deep in the litter and ensures 360° even feed distribution in the feedbox

ADJUSTEMENT SYSTEM



KoChiBo feeder features moveable bottom that enables adjustment of the feeder depth.

With the growth of a chick, the feeding lines may be gradually raised to increase the feeder depth. Therefore, the volume of the feed spilled into the feedbox is also increased thanks to the movement of feeder frame upwards relatively to its bottom. This allows supplying the birds with the higher quantities of feed, while preventing loss of the feed from scattering.

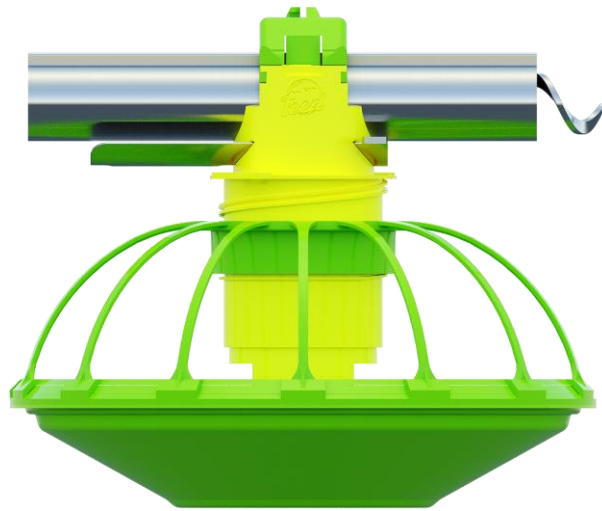
HIT FEEDer

Hit Feed feeder is specifically designed for broiler meat producers committed to improve the final product quality and enhance the production volume.



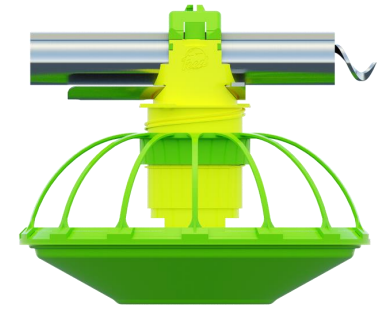


HIT FEED FEEDER



- Easy access to feed for a chick from the very first day of life
- 6-level adjustment of feed supply, feed volume and quantity
- Feeding front (circumferential length) - 1 m
- 7 beans in the distribution unit ensure even distribution of feed inside the feedbox and prevention of feed scattering and loss
- Round bowel with W-shaped profile is mounted deep into the bedding, so the chicks may easily access the feed even at the early stages of life
- **Latch on/off** inside the distribution unit allows shut-off of feed supply to the specific feedbox at the specific time without interruptions of the general feed distribution process

FEEDERS BY TEXHA



Perfect quality

- Use of high-strength elastic material helps to prevent mechanical damage
- Robustness against the aggressive environment
- Resistance to deformation
- Robustness against high-pressure hot washing
- Made of food-grade plastic material

Advantages

- Compatibility with any feeds
- Proprietary designed molding plastic formulation offers optimal balance of plastic component flexibility and rigidity
- Use of primary raw materials of flawless quality completely eliminates unpleasant artificial odor
- High-quality assembly and sealing of connections
- Detachable connections for quick assembly and disassembly
- Use on environmentally friendly and reliable materials

FEEDING SYSTEM

Technical specifications

Transverse feed supply (from feed bin):

- 7 feed bin options available in single or tandem configuration (from 0,54 t/0,9 m³ – to 18,0 t/26,8 m³ per one feed bin)
- Auger feed supply through pipe Ø 90 mm
- Conveyor drive (380V; 50Hz; 0.75kW; capacity 2 600 kg/hour)
- Feed bin weighting system
- Feed reclaim unit
- Separator

Longitudinal feed distribution:

- Loading into small 100 kg feed bin on each line 100
- Feeding line drive (380V; 50Hz; 0,37kW; capacity 500 kg/hour)
- Raising and height adjustment of feeding lines using hand-operated winch with load capacity of 900 kg
- 2 sensors on each line (one at the outermost feedbox and one and the feeding line drive)



DRINKING SYSTEM

Reliable, efficient and easy-to-use drinking system. Supplying the birds with water of proper quality and in sufficient quantity.



The system consists of the following:

- Water treatment unit
- Water distribution system
- Drinking lines

DRINKING SYSTEM

Advantages:

- Drinking line pipes:
 - Made of top-of-class raw materials;
 - In-house manufacturing
 - High-quality assembly
 - Minimum number of connection points
- Nipples may move up/down and rotate by 360°
- Easy access to water even for a day-old chick
- Proprietary designed molding plastic formulation offers optimal balance of plastic component flexibility and rigidity
- Use of primary raw materials of flawless quality completely eliminates unpleasant artificial odor
- High-quality assembly and sealing of connections
- Detachable connections for quick assembly and disassembly
- Use on environmentally friendly and reliable materials



LIGHTING SYSTEM

Advantages:

- Use of LED lamps with energy consumption:
 - o 10 times lower as compared to the filament lamps
 - o 2,5 times lower as compared to the luminescent lamps
- Lighting intensity adjustment in 0-100% range for sunrise / sunset functions
- Compliance with the international environmental requirements
- High level of protection against external impacts
- Warranty and post-warranty service



MICROCLIMATE

The microclimate system may consist of the one to four following sub-systems in various combinations:

- Ventilation
- Heating
- Humidification / cooling
- Automation

Ventilation system by TEXHA:

- High performance
- Energy efficiency
- Low noise level
- Durability of equipment
- Reliability and cost effectiveness

